

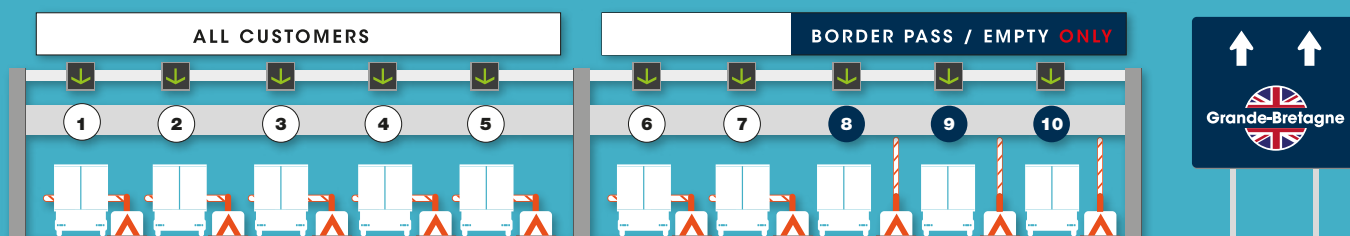
Eurotunnel Border Pass



The fast, smooth and efficient way to cross the border

Eurotunnel Border Pass is an innovative and unique service that enables transport companies to cross the border in a fast and efficient way.

It allows the necessary information to be transferred from the hauliers to Eurotunnel, and then to the authorities in both countries, in a secure and digital way.

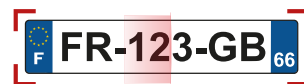


Benefit from many advantages

- ✔ **Dedicated lanes for Border Pass users**
- ✔ **A fast and hassle-free journey**
Drivers save a considerable amount of time on the terminals as their vehicles are automatically identified on arrival.
- ✔ **A flexible and convenient online tool**
A Border Pass can be created and/or amended up to 30 minutes before arrival on our terminal.
- ✔ **A reliable and efficient border crossing**
The information is directly submitted from your support teams and available in our systems on arrival, so drivers do not have to present any border documents at Pit stops.

How does it work?

- 1 Simply log on to your online account at eurotunnelfreight.com, click on "Border Pass".
- 2 Enter your border data (MRN...) and sanitary certificate for SPS goods by linking it to a booking or a vehicle registration number.
- 3 Once your Border Pass is validated, you will receive a unique Border Pass reference.
- 4 A confirmation email is sent and can also be sent to the driver by SMS.
- 5 On arrival at Pit stop, the driver does not need to present any documents. **Vehicles are automatically recognised** and linked to the relevant border information already available in our systems.
- 6 Border data is therefore automatically sent to the relevant authorities.
- 7 During the crossing, the information linked to the vehicle's registration number is processed. The relevant customs status is then provided with the route to be followed on arrival.



Frequently Asked Questions

How long is my Border Pass valid for?

Your Border Pass is valid for a period of 72 hours, i.e. the date of travel and 24 hours before and after this date.

**My load has changed.
How do I amend my Border Pass?**

Whether you make a booking or use the vehicle list, you can easily amend your travel information (date and vehicle registration number) by clicking on "View, amend or cancel a booking".

Is the Border Pass available in both directions?

Yes – the relevant border information is collated and transmitted to both authorities according to the direction.

What happens if I enter an import MRN instead of an export?

We have put in place a large number of filters to prevent this type of errors. However, should a MRN not be recognised by the authorities, the vehicle may be subject to a check.

Where can I find my previous Border Passes?

You can easily retrieve your Border Pass history for the past 3 months via your online account.

Important information

- In order to avoid any delays or issues with your customs documents, please ensure that all changes are made online at eurotunnelfreight.com before your vehicle arrives at our terminal.
- Eurotunnel Border Pass is available in 5 languages, simple to use and easily managed by our customers via their online account.
- A Border Pass can also be done for empty vehicles, postal goods or ATA/TIR carnets to speed up the process.
- The Border Pass will be updated soon to include the GMR requirements effective from 01/01/2022.

To find out more or to request access to this online service, please do not hesitate to contact our Freight Commercial teams
www.eurotunnelfreight.com/contact-us

Follow us @TruckShuttle



Customised information for drivers



Available at
driver.eurotunnelfreight.com

